

SIKA Flow switches feature a modular design, allowing for a variety of products and options. This includes a wide selection of pressure ranges and temperature ranges, selections of materials and connection options, providing a high level of flexibility. SIKA's vast array of configurations allow their flow switches to be utilised in many different areas, including:

- heating technology
- industrial cooling circuits
- water treatment
- potable water applications

Advantages

- Robust metal version for high maximum flow rates
- Brass or stainless steel version, pipe tee DN 8...50

Technical Specifications

Switching Function

Contact

- > closes at increasing flow
- > opens at decreasing flow

Reversing possible

Pressure Rating

PN25

Temperature Ranges

Medium: -25...110°C

Ambient: -25...80°C

Electrical Connection

VHS: Plug connector DIN EN 175301-803-A incl. cable socket

VH3: 1.5 m PVC jacket cable

Switching Current

Max 1A

Switching Voltage

Max 230 VAC, 48 VDC

Rating

Max 26 VA, 20 W

Degree of Protection EN 60529

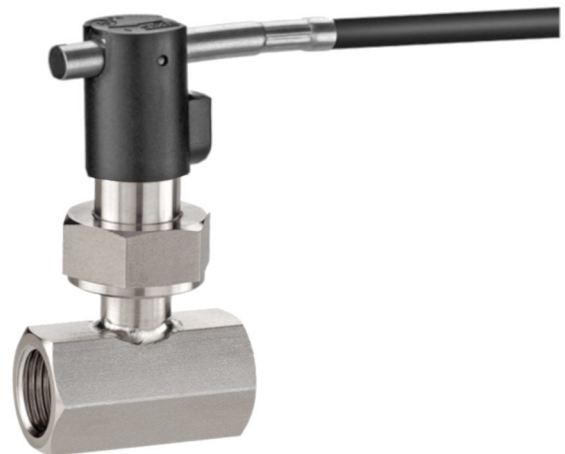
IP65

Protection class EN 60730-1

Class II



VHS - Plug Connector - Brass



VH3 - 1.5m Cable - Stainless Steel

Additional Options:

For type VHS:

- Plug connector DIN EN 175301-803-A incl. cable socket with two LED for switching voltages 24 V...230 V AC/DC $\pm 20\%$, ambient temperature -20...70 °C
- 4-pin-sensor plug M12 x 1

For type VHS/VH3:

- For use in potentially explosive atmospheres (Version VH...X) max. media temperature 100 °C



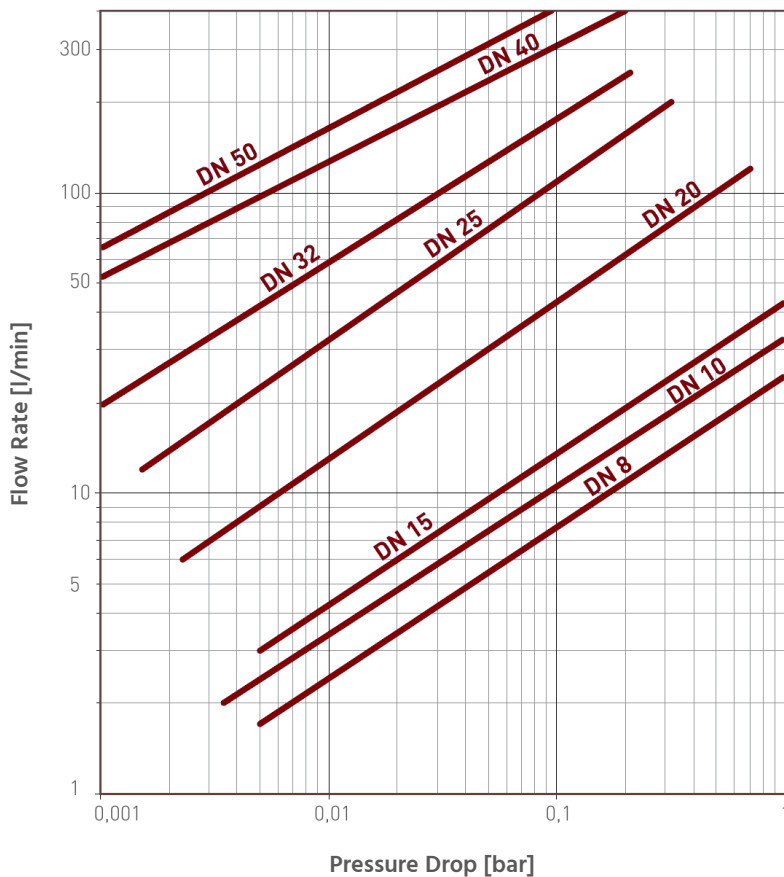
Flow Rates

Nominal Diameter	Thread Connection D ₁	Setpoint Ranges [l/min]*				Max Flow Rate [l/min]
		VHS		VH3		
		Increasing Flow ON	Decreasing Flow OFF	Increasing Flow ON	Decreasing Flow OFF	
DN8	G ¹ / ₄	2.1...2.7	1.8...2.4	1.9...2.5	1.7...2.3	45
DN10	G ³ / ₈	2.5...3.2	2.2...2.9	2.4...3.0	2.1...2.8	60
DN15	G ¹ / ₂	3.4...4.2	3.0...3.8	3.2...4.0	3.0...3.8	67
DN15	G ¹ / ₂ Male**	2.5...3.2	2.2...2.9	2.4...3.0	2.1...2.8	60
DN15	G ¹ / ₂ Male**	2.5...3.2	2.2...2.9	2.4...3.0	2.1...2.8	60
DN20	G ³ / ₄	7.0...9.1	6.4...8.2	6.6...8.2	6.3...7.8	120
DN25	G1	13.5...17.0	12.0...15.5	13.0...15.5	12.5...15.0	195
DN32	G 1 ¹ / ₄	15.5...20.5	14.5...19.0	14.5...18.0	13.5...17.0	240
DN40	G 1 ¹ / ₂	26.5...34.5	25.5...32.5	25.0...31.0	24.0...30.0	400
DN50	G 2	39.5...51.0	39.0...50.0	37.5...47.5	36.5...46.5	400

* Water, 20 °C, horizontal pipe, tolerance ±15 %

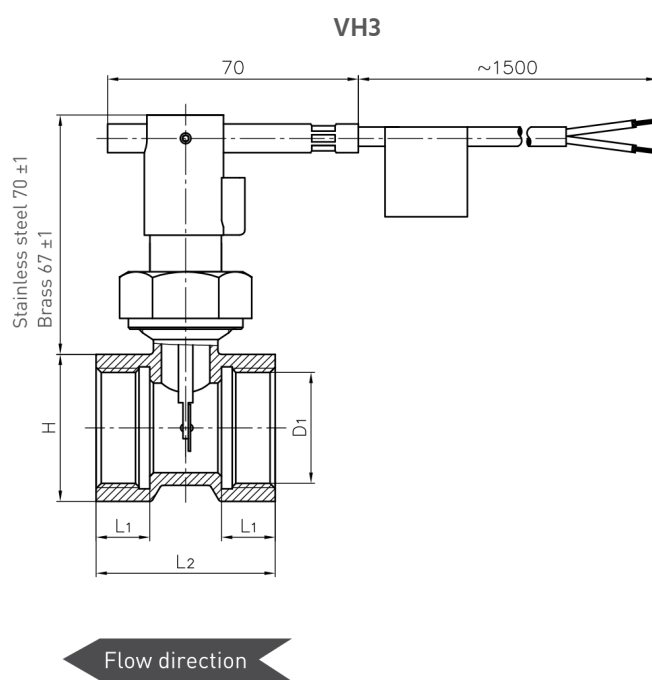
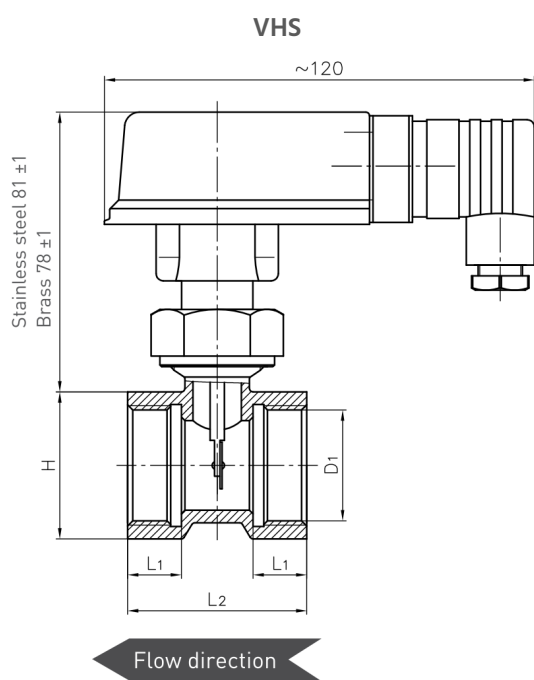
** Only available as brass version

Typical Pressure Drop



Dimensions

Thread Connection D ₁	Brass Version			Stainless Steel Version		
	L ₁	L ₂	H	L ₁	L ₂	H
G ¹ / ₄	11	50	27	11	50	27
G ³ / ₈	11	50	27	11	50	27
G ¹ / ₂	11	50	27	11	50	27
G ¹ / ₂ Male	10	60				
G ¹ / ₂ Male	11	50				
G ³ / ₄	15	50	32	15	50	32
G1	15	50	41	15	50	41
G 1 ¹ / ₄	15	50	48	15	50	46
G 1 ¹ / ₂	15	50	55	15	50	55
G 2	22	64	70	15	50	70



Materials in Contact with Fluid

	Brass Version	Stainless Steel Version
Body, Paddle	Brass CW614N	Stainless Steel 1.4571
Pipe Tee	Brass CW617N	Stainless Steel 1.4571
Bushing	PPE+PS Noryl™ 30 % glass fibre reinforced	PVDF
Rivet	Brass CW508L	Stainless Steel 1.4303
Pin	Stainless Steel 1.4571	
Magnet	Hard Ferrite	
O-Ring	NBR	

Part Number Guide



Type	
DIN Plug	VHS
1.5m PVC Cable	VH3

Nominal Diameter	Thread Connection	
DN8	G ¹ / ₄	08
DN10	G ³ / ₈	10
DN15	G ¹ / ₂ Male	15
DN15	G ¹ / ₂ Male	15
DN15	G ¹ / ₂	15
DN20	G ³ / ₄	20
DN25	G1	25
DN32	G 1 ¹ / ₄	32
DN40	G 1 ¹ / ₂	40
DN50	G 2	50

Material	
Brass	M011
Stainless Steel	M031

Connection	
VHS	
Plug Connector incl. Cable Socket	7
Plug Connector incl. Cable Socket with LED	9
4-pin-sensor plug M12 x 1	8
VH3	
1.5 m PVC jacket cable	1
1.5 m PVC blue jacket cable**	3

** Only for option "for use in potentially explosive atmospheres"

Material	
Standard	()*
For use in potentially explosive atmospheres	X

* No character

Material	
Brass	1
Stainless Steel	3

Nominal Diameter	Thread Connection	
DN8	G ¹ / ₄	1
DN10	G ³ / ₈	2
DN15	G ¹ / ₂	3
DN15	G ¹ / ₂ Male	A3
DN15	G ¹ / ₂ Male	A4
DN20	G ³ / ₄	4
DN25	G1	5
DN32	G 1 ¹ / ₄	6
DN40	G 1 ¹ / ₂	7
DN50	G 2	8

Material	
Brass	1
Stainless Steel	3

Example:

VHS25M0117|51

Plug connector incl. cable socket, DN 25, G 1, brass, standard