

A compact vacuum switch utilising a high quality snap action micro switch for applications in which price and size are of concern. It is used for pneumatic, water and low pressure applications.



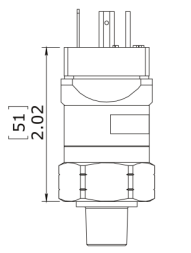
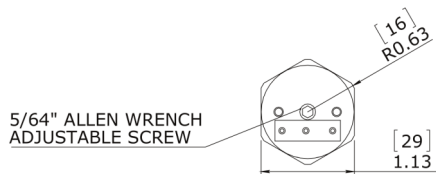
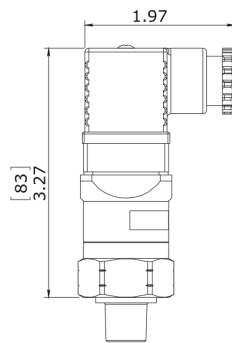
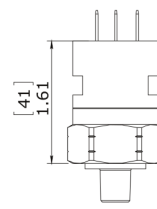
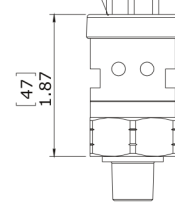
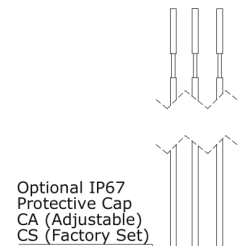
FL - Flying Leads

HC - DIN Plug

SP - Spade Terminal

Pressure Range		
PVDMA	5-30" inHg	170-1016 Millibar

<b>Electrical</b>	5A (12/24 VDC) - (125/250 VAC)
<b>Protection</b>	DIN 43650A IP65 - HC, Spade Terminal IP00 - SP, Flying Leads IP65 - FL
<b>Mechanical Life</b>	1,000,000 at 20 inHg
<b>Diaphragm Material</b>	Nitrile (standard), Viton and EPDM options.
<b>Housing Material</b>	Brass (standard), Stainless Steel options.
<b>Max. Overpressure</b>	25 bar
<b>Repeatability</b>	+/- 2% full set point @20° C
<b>Differential</b>	10-40%
<b>Weight</b>	0.12kg


 H  
DIN Male Only

 HC  
DIN 43650A

 SP  
1/4" Spades

 FL  
Flying Leads

PVDMA	-	XX	-	X	-	XX	-	X	-	X
	CONNECTION		SWITCH		EC CONNECTION		BODY		DIAPHRAGM	
	G1/8" Male	<b>2G</b>	Normally Open	<b>A</b>	DIN Plug	<b>HC</b>	Brass	<b>2</b>	Viton	<b>1</b>
	1/8" NPT Male	<b>2M</b>	Normally Closed	<b>B</b>	Flying Leads	<b>FL</b>	St.St.	<b>3</b>	EPDM	<b>2</b>
	G1/4" Male	<b>4G</b>	Change Over	<b>C</b>	Spade Terminal	<b>SP</b>			Nitrile	<b>4</b>